

**Magnetically operated switches  
with Reed contact**

**Alternative materials allows a wide range of  
application**

**Switch with plug****Technical data**

Operation:

TQM/31 normally open

QM/32 normally open with LED (yellow)

Switching voltage:

10 to 240 V a.c./d.c.

Switching voltage output:

Ub - 2 V (QM/32)

Switching current (see graph overleaf):

1 A max. QM/32

Switching power:

50 W/50 VA max.

Note: Switch life may be greatly reduced when switching reactive loads, e.g. solenoid, relay, and long cable runs. In such cases the fitment of appropriate voltage/current limiting devices should be considered.

Contact resistance:

100 mΩ

Response time:

3 ms

Operating temperature:

-20°C to +80°C

Protection rating:

IP 66 (DIN 40050)

Shock resistance:

50 g (during 11 ms)

Vibration resistance:

35 g (50 bis 2000 Hz)

Cable type

PVC 2 x 0,75

Cable length:

2, 5 or 10 m

Weight:

TQM/31/2: 102 g, QM/32/2: 108 g, QM/32/P: 15 g

**Materials:**

Body: plastic

**Ordering example**

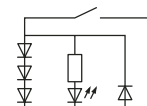
See page 2

**Alternative switches**

See page 2

**Accessories**

Plug-in connector see page 2



QM/32



### Alternative switches

Symbol	Switch (without LED)	Symbol	Switch (with LED)	Description
	BN BU		QM/32/* QM/32*/PU	Standart PVC cable 2 x 0,75, cable length 2, 5 or 10 m Very flexible polyurethane cable 2 x 0,75, cable length 5
	TQM/31/*		BU	High temperature (+150°C), silicone cable 2 x 0,75 cable length 2, 5 or 10 m, switching current see page 3
			QM/32/P	Plug-in connector, Cable see below
			BU	

\* Insert cable length please  
Color code: BN = broun, BU = blue

### Option selector

**\*QM/3\*/\*\*/\*\***

Variants	Substitute
High temperature (+150°C), for Typ TQM/31/* only	T

Type	Substitute
Reed with LED	2
Reed without LED	1

Cable	Substitute
PUR	PU

Cable length/plug	Substitute
2 m	2
5 m	5
10 m	10
With plug M12 x 1	P


### Ordering Information

To order a reed switch with LED  
and 5 m cable length  
**quote: QM/32/5**

Order mounting brackets separately.

### Accessories

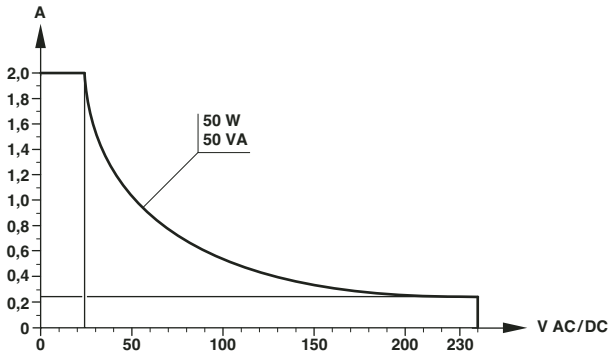
**Plug-in connector cables**



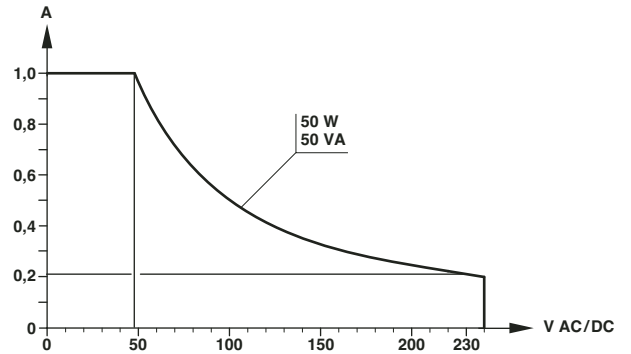
Type	Cable	Cable length	Weight (kg)
M/P34692/5	PVC 3 x 0,34	5 m	0,182
M/P34594/5	PUR 3 x 0,34	5 m	0,182

**Switching current and switching voltage**

**TQM/31**

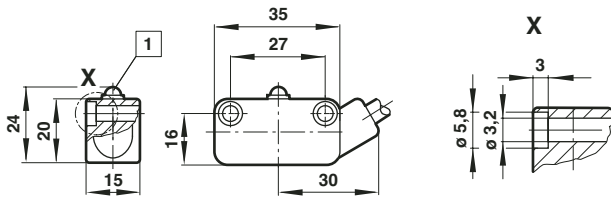


**QM/32**

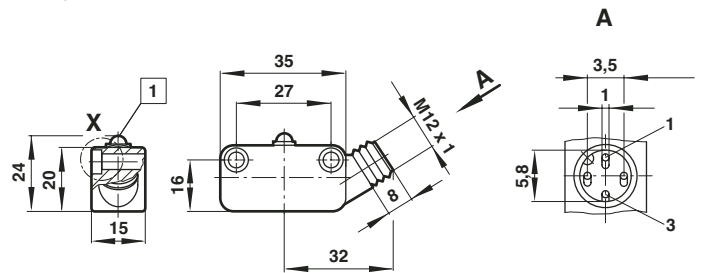


**Basic dimensions**

**TQM/31, QM/31/C, QM/32**



**QM/32/P**



**1** QM/32 with LED only

**Warning**

These products are intended for use in industrial control systems only. Do not use these products where voltage, current and temperatures can exceed those listed under **‘Technical Data’**. Before using these products for non-industrial applications, life-support systems, or other applications not within published specifications, consult NORGREN. Through misuse, age, or malfunction, components used in control systems can fail in various modes.

The system designer is warned to consider the failure modes of all component parts used in control systems and to provide adequate safeguards to prevent personal injury or damage to equipment in the event of such failure.

**System designers must provide a warning to end users in the system instructional manual if protection against a failure mode cannot be adequately provided.**

System designers and end users are cautioned to review specific warnings found in instruction sheets packed and shipped with these products.