

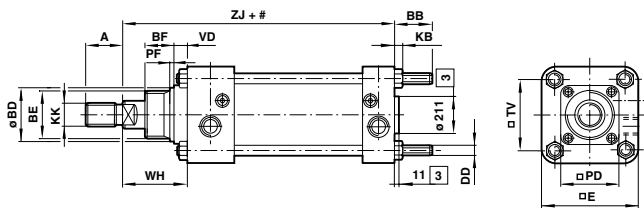
CLASSIC RANGE INCH LARGE BORE

Martonair RM/900

Magnetic and non-magnetic Ø 1,25 ... 14"



- Large range of bore sizes – ideal for a wide variety of industrial applications
- Long established design – proven ruggedness and reliability
- Extensive choice of mountings
- Adjustable cushioning
- Magnetic and non-magnetic piston



= Stroke

Dimensions

Model	Dia. Ø inch	A	BB	Ø BD	BE	BF	DD	E	KB	KK	PD	PF	TV	VD	WH	ZJ
RM/9125	1 1/4	14,5	22	22	M 22 x 2	19	M 6	45	5	M 10	-	-	30,5	8	37	125,5
RM/9175	1 3/4	19	26,5	27	M 27 x 2	19	M 8	57	6,5	M 12	-	-	43	8	37	132,5
RM/920	2	24	25	34	M 33 x 2	20	M 8	63,5	6,5	M 16	-	3	47,5	9,5	46	137
RM/925	2 1/2	33,5	25	40	M 39 x 2	25,5	M 8	74,5	6,5	M 22	-	3	55,5	8	53	152,5
RM/930	3	33,5	33	40	M 39 x 2	25,5	M 10	91	8	M 22	59	3	66,5	13	56,5	179,5
RM/940	4	38	32	-	Ø 43	-	M 10	114	8	M 24	63,5	-	89	13	64	187,5
RM/950	5	47,5	48	-	Ø 58,5	-	M 12	140	10	M 30	82,5	-	108	18	83	228,5
RM/960	6	47,5	49,5	-	Ø 58,5	-	M 16	167	13	M 30	82,5	-	128,5	18	83	235
RM/980	8	57	53,5	-	Ø 63,5	-	M 18	219	15	M 36	89	-	168,5	19	86	276
RM/9100	10	76	70,5	-	Ø 77	-	M 24	270	19	M 48	111	-	209,5	22	109	343
RM/9120	12	76	70,5	-	Ø 77	-	M 24	321	19	M 48	111	-	246	22	109	343
RM/9140	14	76	93	-	Ø 89	-	M 30	375	24	M 48	-	-	292	32	128	366,5

Models

MAGNETIC Model	NON-MAGNETIC Model	Dia. Ø	Piston rod Ø	Port size	Service kit
RM/9125/M/*	RM/9125/*	1 1/4	12 mm	G 1/8	QM/9125/00
RM/9175/M/*	RM/9175/*	1 3/4	16 mm	G 1/4	QM/9175/00
RM/920/M/*	RM/920/*	2	20 mm	G 1/4	QM/920/00
RM/925/M/*	RM/925/*	2 1/5	25 mm	G 3/8	QM/925/00
RM/930/M/*	RM/930/*	3	25 mm	G 3/8	QM/930/00
RM/940/M/*	RM/940/*	4	32 mm	G 3/8	QM/940/00
-	RM/950/*	5	1 1/2"	G 1/2	QM/950/00
-	RM/960/*	6	1 1/2"	G 1/2	QM/960/00
-	RM/980/*	8	1 3/4"	G 3/4	QM/980/00
-	RM/9100/*	10	2 1/4"	G 1	QM/9100/00
-	RM/9120/*	12	2 1/4"	G 1	QM/9120/00
-	RM/9140/*	14	2 1/4"	G 1	QM/9140/00

* Insert stroke length in mm
Standard stroke lengths; RM/9125; 50, 75, 100, 125, 150, 200, 300
RM/9175 to RM/980; 100, 150, 200, 300, 400, 500
Please call your Express Team for latest availability

If you can't see the option you require...
...call the Express hotline now!

For further information
www.norgren.com/info/nec/en063

