

# SLIDE UNITS M/60100/M

Double acting – Ø 10 ... 40 mm

- High quality sliding bearings ensure long durable life and high guidance performance
- Double piston rod provides high bending and torsional rigidity
- Magnetic piston as standard
- Easy to install – reduces costly design time



## TECHNICAL DATA

**Medium:**  
Compressed air, filtered, lubricated or non-lubricated

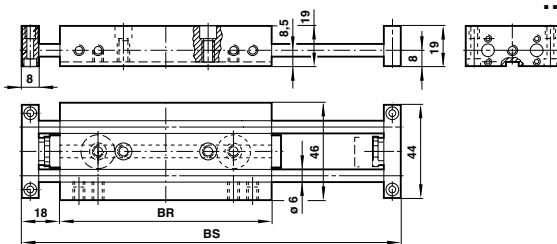
**Operation:**  
Double acting with magnetic piston and buffer cushioning

**Operating pressure:**  
1 to 8 bar

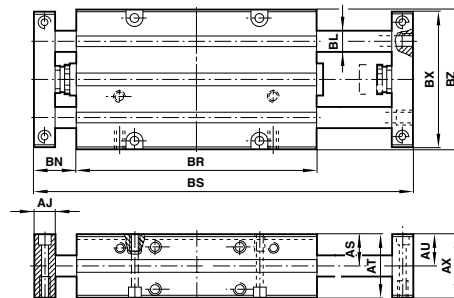
**Operating temperature:**  
0°C to +80°C

Consult our Technical Service for use below +2°C

### M/60111/M



### M/60116/M ... M/60140/M



### Dimensions (M/60111/M)

Strokes (mm)	BR	BS
25	100	161
50	100	186
75	150	261

### Dimensions (M/60116/M ... M/60140/M)

Model	AJ	AS	AT	AU	AX	Ø BL	BN	BX	BZ
M/60116	10	16	30	15	30	10	20	64	66
M/60125	12	21,5	40	20,5	40	16	22	90	92
M/60132	15	27,5	50	26,5	50	20	28	116	118
M/60140	20	32,5	60	31,5	60	25	31	144	146

### Variable stroke Dimensions (M/60116/M ... M/60140/M)

Model		Strokes (mm)							
		25	50	75	100	125	150	175	200
M/60116	BR	113,5	113,5	163,5	163,5	213,5	213,5	-	-
M/60116	BS	179	204	279	304	379	404	-	-
M/60125	BR	-	152	152	202	202	252	252	-
M/60125	BS	-	246	271	346	371	446	471	-
M/60132	BR	-	-	190	190	240	240	290	290
M/60132	BS	-	-	321	346	421	446	521	546
M/60140	BR	-	-	-	236,5	236,5	286,5	286,5	336,5
M/60140	BS	-	-	-	398	423	498	523	598



For further information  
[www.norgren.com/info/nec/en046](http://www.norgren.com/info/nec/en046)

If you can't see the option you require...  
 ...call the Express hotline now!

## SLIDE UNITS M/60100/M

Double acting – Ø 10 ... 40 mm

## Models

## Accessories

Model	Dia. Ø	Stroke length	Port size	Guide Rod Ø (x2)	Reed switch with integral 5 m cable	Banjo flow control	Straight fitting	Elbow fitting	Service kit
									
M/60111/M/25	10	25	M5	6	M/50/LSU/5V	C0K510405	C02250405	C02470405	QM/60111/M/00
M/60111/M/50	10	50	M5	6	M/50/LSU/5V	C0K510405	C02250405	C02470405	QM/60111/M/00
M/60111/M/75	10	75	M5	6	M/50/LSU/5V	C0K510405	C02250405	C02470405	QM/60111/M/00
M/60116/M/25	16	25	M5	10	M/50/LSU/5V	C0K510405	C02250405	C02470405	QM/60116/M/00
M/60116/M/50	16	50	M5	10	M/50/LSU/5V	C0K510405	C02250405	C02470405	QM/60116/M/00
M/60116/M/75	16	75	M5	10	M/50/LSU/5V	C0K510405	C02250405	C02470405	QM/60116/M/00
M/60116/M/100	16	100	M5	10	M/50/LSU/5V	C0K510405	C02250405	C02470405	QM/60116/M/00
M/60116/M/125	16	125	M5	10	M/50/LSU/5V	C0K510405	C02250405	C02470405	QM/60116/M/00
M/60125/M/50	25	50	M5	16	M/50/LSU/5V	C0K510405	C02250405	C02470405	QM/60125/M/00
M/60125/M/75	25	75	M5	16	M/50/LSU/5V	C0K510405	C02250405	C02470405	QM/60125/M/00
M/60125/M/100	25	100	M5	16	M/50/LSU/5V	C0K510405	C02250405	C02470405	QM/60125/M/00
M/60125/M/125	25	125	M5	16	M/50/LSU/5V	C0K510405	C02250405	C02470405	QM/60125/M/00
M/60125/M/150	25	150	M5	16	M/50/LSU/5V	C0K510405	C02250405	C02470405	QM/60125/M/00
M/60125/M/175	25	175	M5	16	M/50/LSU/5V	C0K510405	C02250405	C02470405	QM/60125/M/00
M/60132/M/75	32	75	G1/8	20	M/50/LSU/5V	C0K510618	C02250618	C02470618	QM/60132/M/00
M/60132/M/100	32	100	G1/8	20	M/50/LSU/5V	C0K510618	C02250618	C02470618	QM/60132/M/00
M/60132/M/125	32	125	G1/8	20	M/50/LSU/5V	C0K510618	C02250618	C02470618	QM/60132/M/00
M/60132/M/150	32	150	G1/8	20	M/50/LSU/5V	C0K510618	C02250618	C02470618	QM/60132/M/00
M/60132/M/175	32	175	G1/8	20	M/50/LSU/5V	C0K510618	C02250618	C02470618	QM/60132/M/00
M/60132/M/200	32	200	G1/8	20	M/50/LSU/5V	C0K510618	C02250618	C02470618	QM/60132/M/00
M/60140/M/100	40	100	G1/8	25	M/50/LSU/5V	C0K510618	C02250618	C02470618	QM/60140/M/00
M/60140/M/125	40	125	G1/8	25	M/50/LSU/5V	C0K510618	C02250618	C02470618	QM/60140/M/00
M/60140/M/150	40	150	G1/8	25	M/50/LSU/5V	C0K510618	C02250618	C02470618	QM/60140/M/00
M/60140/M/175	40	175	G1/8	25	M/50/LSU/5V	C0K510618	C02250618	C02470618	QM/60140/M/00
M/60140/M/200	40	200	G1/8	25	M/50/LSU/5V	C0K510618	C02250618	C02470618	QM/60140/M/00

For information on additional magnetic switches see page 58

If you can't see the option you require...  
...call the Express hotline now!