

CLASSIC RANGE STAINLESS STEEL TIE-ROD CYLINDERS

KA/8000

Double acting Ø 32 ... 200mm

High corrosion and acid resistance

Conforms to ISO 6431, VDMA 24562 and NFE 49-003-1

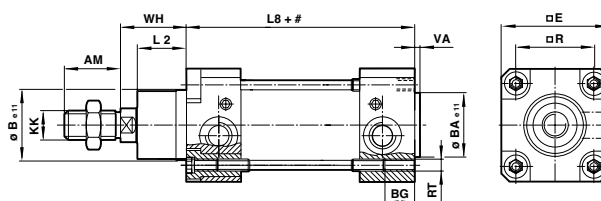
Ideal for applications in the food industry



EXPRESS PLUS

Alternative ranges available...

Stainless steel (Clean line) roundline cylinder range also available, please call your Express Team



= Stroke

Dimensions

Dia. Ø	AM	Ø B/BA e11	BG	□E	KK	L2	L8	□R	RT	VA	WH
32	22	30	18	47	M10x1,25	20	94	32,5	M 6	3	26
40	24	35	18	53	M12x1,25	22	105	38	M 6	3,5	30
50	32	40	18	65	M16x1,5	27	106	46,5	M 8	3,5	37
63	32	45	17,5	75	M16x1,5	29	121	56,5	M 8	4	37
80	40	45	21,5	95	M20x1,5	33	128	72	M 10	4	46
100	40	55	21,5	115	M20x1,5	36	138	89	M 10	4	51
125	54	60	32	140	M27x2	45	160	110	M 12	6	65
160	72	65	28,5	180	M36x2	58	180	140	M 16	4	80
200	72	75	28,5	220	M36x2	67	180	175	M 16	5	95

Models

MAGNETIC Model	NON-MAGNETIC Model	Dia. Ø	Piston rod Ø	Port size	Service kit
KA/8032/M/*	KA/8032/*	32	12	G1/8	KQA/8032/00
KA/8040/M/*	KA/8040/*	40	16	G1/4	KQA/8040/00
KA/8050/M/*	KA/8050/*	50	20	G1/4	KQA/8050/00
KA/8063/M/*	KA/8063/*	63	20	G3/8	KQA/8063/00
KA/8080/M/*	KA/8080/*	80	25	G3/8	KQA/8080/00
KA/8100/M/*	KA/8100/*	100	25	G1/2	KQA/8100/00
KA/8125/M/*	KA/8125/*	125	32	G1/2	KQA/8125/00
KA/8160/M/*	KA/8160/*	160	40	G3/4	KQA/8160/00
KA/8200/M/*	KA/8200/*	200	40	G3/4	KQA/8200/00

* Insert stroke length in mm

Standard stroke lengths; 25, 50, 80, 100, 125, 160, 200, 250, 320, 400, 500

Please call your Express Team for latest availability

Accessories



For further information
www.norgren.com/info/nec/en062

If you can't see the option you require...
...call the Express hotline now!