

ITEM 079265 N1AD502-M

Description	Technical data	Accessories	Downloads
-------------	----------------	-------------	-----------



Features

- › Plunger material stainless steel
- › Housing according to DIN 43693
- › Low temperature down to -40°C

Mechanical figures and environment

Contact bounce time	< 3ms
Contact closing time	< 4ms
Design	Housing according to DIN 43693
Housing material	Anodized die-cast alloy
Ground	
	Net 0,25 kg
Ambient temperature	-5 ... 80 °C
Degree of protection	IP67
Mechanical life	30 x 10 ⁶
Contact material	Silver alloy, gold flashed
Switching principle	Snap-action switching contact

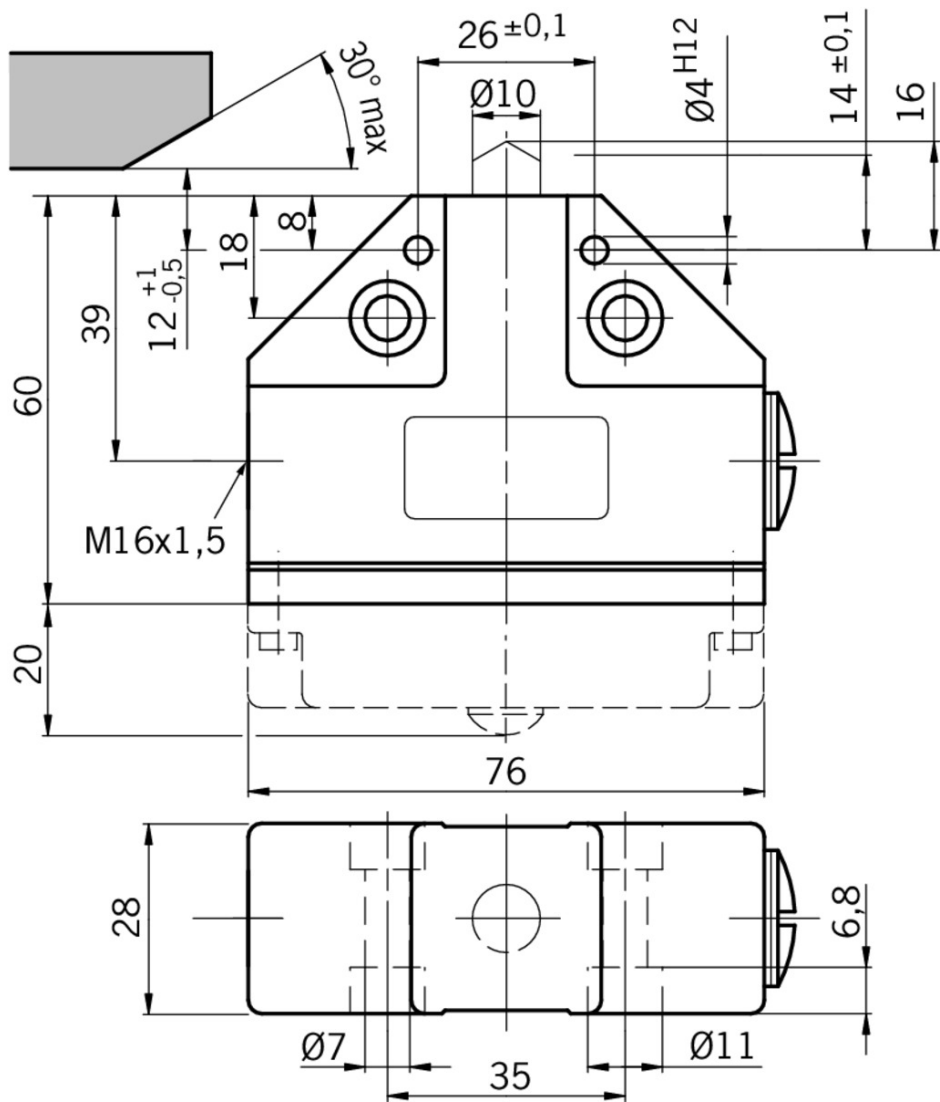
Installation position	Any
Number of switching elements	1
Number of NC contacts	1
Number of NO contacts	1
Connection	2 x M16 x 1.5
Approach speed	max. 0,01 ... 40 m/min
Actuating element	Chisel plunger
Actuating force	min. 20 N
Operating point accuracy	± 0.002 [1]

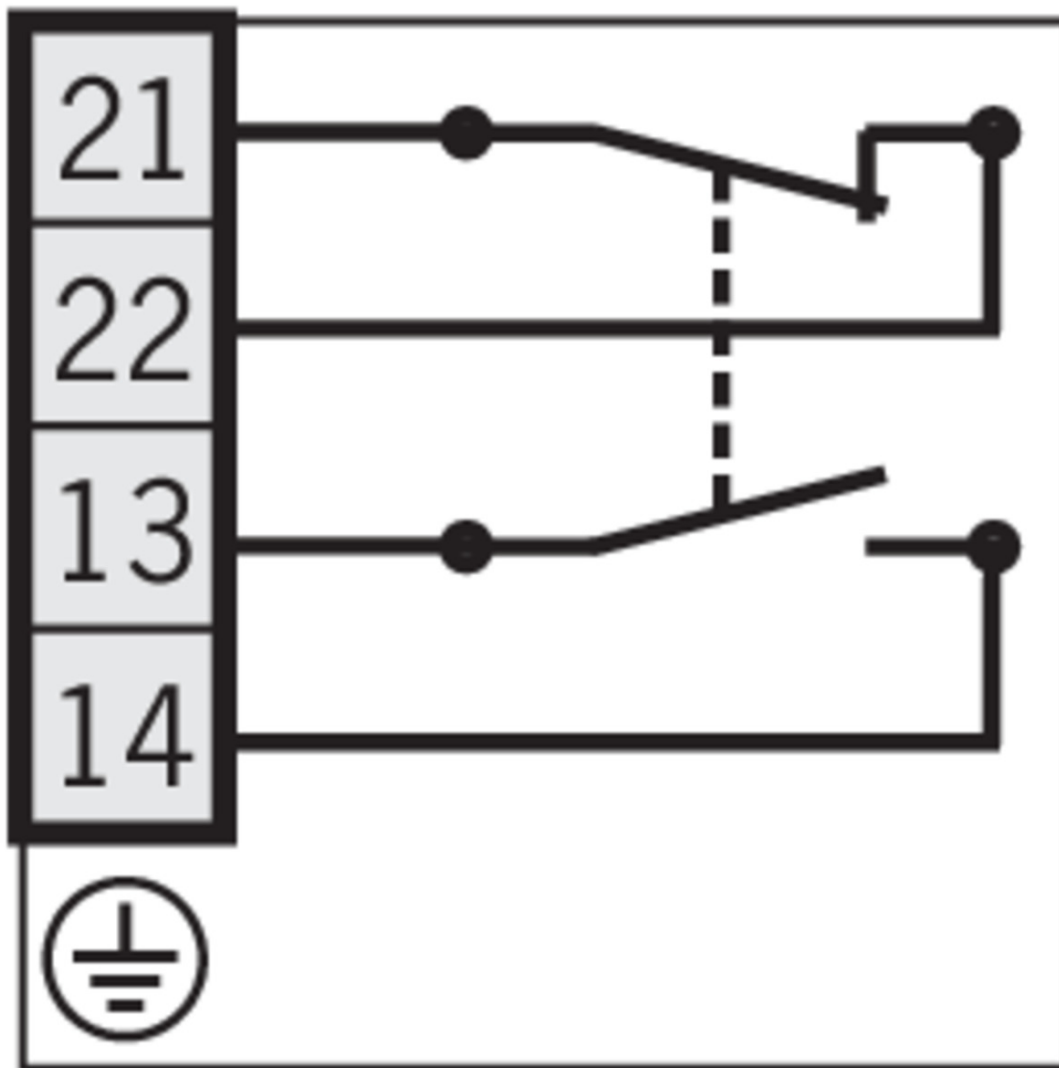
Electrical connection ratings

Thermal rated current I_{th}	8 A
Utilization category acc. to EN 60947-5-1	AC-15 6A 230V DC-13 6A 24V AC-12 8 A, 250 V
Short circuit protection according to IEC 60269-1	(Fuse) 8A gG
Rated insulation voltage U_i	250 V
Rated impulse withstand voltage U_{imp}	2,5 kV
Switching current	Min. at DC 12V 10 mA
Connection cross-section	0,34 ... 1,5 mm ²

[1] The reproducible switching point accuracy refers to the axial travel of the plunger after the switching element ES 502 E has been run-in with approx. 2000 operating cycles.

Dimension drawing











Instructions

- Operating Instructions Precision Single Limit Switches N1A

	Doc. no.	Version	Language	Download
Betriebsanleitung Präzisions-Einzelgrentzaster N1A	032309	10-11/15		1.9 MB
Operating Instructions Precision Single Limit Switches N1A				
Manual de instrucciones Finales de carrera unitarios de precisión N1A				
Mode d'emploi pour les monopistes de précision N1A				
Istruzioni di impiego dei finecorsa di precisione singoli N1A				

Catalogs

- Position Switches

	Doc. no.	Version	Language	Download
Positionsschalter	094549	10-12/13		 7.0 MB
Position Switches	094550	10-12/13		 6.9 MB
Interrupteurs de position	111607	10-12/13		 7.0 MB

CAD data

CAD data for this item on TraceParts