

ATUADORES ISO/VDMA RA/8000/M

Dupla ação - Ø 32 a 320 mm

Conforme ISO 15552, ISO 6431, VDMA 24562 e NFE 49-003-1

Alto desempenho, robustez e confiabilidade

Várias opções de montagens

CARACTERÍSTICAS TÉCNICAS

Fluido:

Ar comprimido, filtrado, lubrificado ou não lubrificado

Operação:

Dupla ação, êmbolo magnético, amortecimento ajustável

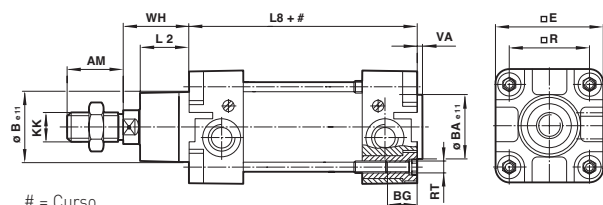
Pressão de operação:

1 a 16 bar (1 a 10 bar para Ø 250 e 320 mm)

Temperatura de operação:

-20°C a +80°C máx.

Consulte nosso Depto. Técnico para uso abaixo de +2°C



= Curso

Dimensões

Diam. Ø	AM	Ø BA/Be11	BG	E	KK	L2	L8	R	RT	VA	WH
32	22	30	18	47	M10x1,25	20	94	32,5	M 6	3	26
40	24	35	18	53	M12x1,25	22	105	38	M 6	3,5	30
50	32	40	18	65	M16x1,5	27	106	46,5	M 8	3,5	37
63	32	45	17,5	75	M16x1,5	29	121	56,5	M 8	4	37
80	40	45	21,5	95	M20x1,5	33	128	72	M 10	4	46
100	40	55	21,5	115	M20x1,5	36	138	89	M 10	4	51
125	54	60	30	140	M27x2	45	160	110	M12	6	65
160	72	65	28,5	183,5	M36x2	58	180	140	M16	4	80
200	72	75	28,5	224	M36x2	67	180	175	M16	5	95
250	84	90	35	280	M42x2	80	200	220	M20	7	105
320	96	110	30	350	M48x2	90	220	270	M24	7	120

Modelos

Acessórios

Modelo	Diam. Ø	Curso	Rosca	Haste Ø	Sensor Reed com cabo de 5 m integral	Suporte do sensor	Banjo	Conexão reta	Cotovelo	Kit de reparo
RA/8032/M/25	32	25	G1/8	12	M/50/LSU/5V	QM/27/2/1	C0K510618	C02250618	C02470618	QA/8032/00
RA/8032/M/50	32	50	G1/8	12	M/50/LSU/5V	QM/27/2/1	C0K510618	C02250618	C02470618	QA/8032/00
RA/8032/M/80	32	80	G1/8	12	M/50/LSU/5V	QM/27/2/1	C0K510618	C02250618	C02470618	QA/8032/00
RA/8032/M/100	32	100	G1/8	12	M/50/LSU/5V	QM/27/2/1	C0K510618	C02250618	C02470618	QA/8032/00
RA/8032/M/125	32	125	G1/8	12	M/50/LSU/5V	QM/27/2/1	C0K510618	C02250618	C02470618	QA/8032/00
RA/8032/M/160	32	160	G1/8	12	M/50/LSU/5V	QM/27/2/1	C0K510618	C02250618	C02470618	QA/8032/00
RA/8032/M/200	32	200	G1/8	12	M/50/LSU/5V	QM/27/2/1	C0K510618	C02250618	C02470618	QA/8032/00
RA/8032/M/250	32	250	G1/8	12	M/50/LSU/5V	QM/27/2/1	C0K510618	C02250618	C02470618	QA/8032/00
RA/8032/M/320	32	320	G1/8	12	M/50/LSU/5V	QM/27/2/1	C0K510618	C02250618	C02470618	QA/8032/00
RA/8032/M/400	32	400	G1/8	12	M/50/LSU/5V	QM/27/2/1	C0K510618	C02250618	C02470618	QA/8032/00
RA/8032/M/500	32	500	G1/8	12	M/50/LSU/5V	QM/27/2/1	C0K510618	C02250618	C02470618	QA/8032/00

Para mais informações, visite a store.norgren.com/br e utilize a nova função de busca. Se você não encontrou a opção que busca então entre em contato com seu time Express.

ATUADORES ISO /VDMA RA/8000, RA/8000/M

Dupla ação - Ø 32 a 320 mm

Modelos

Acessórios

Modelo	Diam. Ø	Curso	Rosca	Haste Ø	Sensor Reed com cabo de 5 m integral	Suporte do sensor	Banjo	Conexão reta	Cotovelo	Kit de reparo
RA/8040/M/25	40	25	G1/4	16	M/50/LSU/5V	QM/27/2/1	C0K510628	C02250628	C02470628	QA/8040/00
RA/8040/M/50	40	50	G1/4	16	M/50/LSU/5V	QM/27/2/1	C0K510628	C02250628	C02470628	QA/8040/00
RA/8040/M/80	40	80	G1/4	16	M/50/LSU/5V	QM/27/2/1	C0K510628	C02250628	C02470628	QA/8040/00
RA/8040/M/100	40	100	G1/4	16	M/50/LSU/5V	QM/27/2/1	C0K510628	C02250628	C02470628	QA/8040/00
RA/8040/M/125	40	125	G1/4	16	M/50/LSU/5V	QM/27/2/1	C0K510628	C02250628	C02470628	QA/8040/00
RA/8040/M/160	40	160	G1/4	16	M/50/LSU/5V	QM/27/2/1	C0K510628	C02250628	C02470628	QA/8040/00
RA/8040/M/200	40	200	G1/4	16	M/50/LSU/5V	QM/27/2/1	C0K510628	C02250628	C02470628	QA/8040/00
RA/8040/M/250	40	250	G1/4	16	M/50/LSU/5V	QM/27/2/1	C0K510628	C02250628	C02470628	QA/8040/00
RA/8040/M/320	40	320	G1/4	16	M/50/LSU/5V	QM/27/2/1	C0K510628	C02250628	C02470628	QA/8040/00
RA/8040/M/400	40	400	G1/4	16	M/50/LSU/5V	QM/27/2/1	C0K510628	C02250628	C02470628	QA/8040/00
RA/8040/M/500	40	500	G1/4	16	M/50/LSU/5V	QM/27/2/1	C0K510628	C02250628	C02470628	QA/8040/00
RA/8050/M/25	50	25	G1/4	20	M/50/LSU/5V	QM/27/2/1	C0K510828	C02250828	C02470828	QA/8050/00
RA/8050/M/50	50	50	G1/4	20	M/50/LSU/5V	QM/27/2/1	C0K510828	C02250828	C02470828	QA/8050/00
RA/8050/M/80	50	80	G1/4	20	M/50/LSU/5V	QM/27/2/1	C0K510828	C02250828	C02470828	QA/8050/00
RA/8050/M/100	50	100	G1/4	20	M/50/LSU/5V	QM/27/2/1	C0K510828	C02250828	C02470828	QA/8050/00
RA/8050/M/125	50	125	G1/4	20	M/50/LSU/5V	QM/27/2/1	C0K510828	C02250828	C02470828	QA/8050/00
RA/8050/M/160	50	160	G1/4	20	M/50/LSU/5V	QM/27/2/1	C0K510828	C02250828	C02470828	QA/8050/00
RA/8050/M/200	50	200	G1/4	20	M/50/LSU/5V	QM/27/2/1	C0K510828	C02250828	C02470828	QA/8050/00
RA/8050/M/250	50	250	G1/4	20	M/50/LSU/5V	QM/27/2/1	C0K510828	C02250828	C02470828	QA/8050/00
RA/8050/M/320	50	320	G1/4	20	M/50/LSU/5V	QM/27/2/1	C0K510828	C02250828	C02470828	QA/8050/00
RA/8050/M/400	50	400	G1/4	20	M/50/LSU/5V	QM/27/2/1	C0K510828	C02250828	C02470828	QA/8050/00
RA/8050/M/500	50	500	G1/4	20	M/50/LSU/5V	QM/27/2/1	C0K510828	C02250828	C02470828	QA/8050/00
RA/8063/M/25	63	25	G3/8	20	M/50/LSU/5V	QM/27/2/1	C0K510838	C02250838	C02470838	QA/8063/00
RA/8063/M/50	63	50	G3/8	20	M/50/LSU/5V	QM/27/2/1	C0K510838	C02250838	C02470838	QA/8063/00
RA/8063/M/80	63	80	G3/8	20	M/50/LSU/5V	QM/27/2/1	C0K510838	C02250838	C02470838	QA/8063/00
RA/8063/M/100	63	100	G3/8	20	M/50/LSU/5V	QM/27/2/1	C0K510838	C02250838	C02470838	QA/8063/00
RA/8063/M/125	63	125	G3/8	20	M/50/LSU/5V	QM/27/2/1	C0K510838	C02250838	C02470838	QA/8063/00
RA/8063/M/160	63	160	G3/8	20	M/50/LSU/5V	QM/27/2/1	C0K510838	C02250838	C02470838	QA/8063/00
RA/8063/M/200	63	200	G3/8	20	M/50/LSU/5V	QM/27/2/1	C0K510838	C02250838	C02470838	QA/8063/00
RA/8063/M/250	63	250	G3/8	20	M/50/LSU/5V	QM/27/2/1	C0K510838	C02250838	C02470838	QA/8063/00
RA/8063/M/320	63	320	G3/8	20	M/50/LSU/5V	QM/27/2/1	C0K510838	C02250838	C02470838	QA/8063/00
RA/8063/M/400	63	400	G3/8	20	M/50/LSU/5V	QM/27/2/1	C0K510838	C02250838	C02470838	QA/8063/00
RA/8063/M/500	63	500	G3/8	20	M/50/LSU/5V	QM/27/2/1	C0K510838	C02250838	C02470838	QA/8063/00
RA/8080/M/25	80	25	G3/8	25	M/50/LSU/5V	QM/27/2/1	C0K511038	C02251038	C02471038	QA/8080/00
RA/8080/M/50	80	50	G3/8	25	M/50/LSU/5V	QM/27/2/1	C0K511038	C02251038	C02471038	QA/8080/00
RA/8080/M/80	80	80	G3/8	25	M/50/LSU/5V	QM/27/2/1	C0K511038	C02251038	C02471038	QA/8080/00
RA/8080/M/100	80	100	G3/8	25	M/50/LSU/5V	QM/27/2/1	C0K511038	C02251038	C02471038	QA/8080/00
RA/8080/M/125	80	125	G3/8	25	M/50/LSU/5V	QM/27/2/1	C0K511038	C02251038	C02471038	QA/8080/00
RA/8080/M/160	80	160	G3/8	25	M/50/LSU/5V	QM/27/2/1	C0K511038	C02251038	C02471038	QA/8080/00
RA/8080/M/200	80	200	G3/8	25	M/50/LSU/5V	QM/27/2/1	C0K511038	C02251038	C02471038	QA/8080/00
RA/8080/M/250	80	250	G3/8	25	M/50/LSU/5V	QM/27/2/1	C0K511038	C02251038	C02471038	QA/8080/00
RA/8080/M/320	80	320	G3/8	25	M/50/LSU/5V	QM/27/2/1	C0K511038	C02251038	C02471038	QA/8080/00
RA/8080/M/400	80	400	G3/8	25	M/50/LSU/5V	QM/27/2/1	C0K511038	C02251038	C02471038	QA/8080/00
RA/8080/M/500	80	500	G3/8	25	M/50/LSU/5V	QM/27/2/1	C0K511038	C02251038	C02471038	QA/8080/00
RA/8100/M/50	100	50	G1/2	25	M/50/LSU/5V	QM/27/2/1	C0K511248	C02251248	C02471248	QA/8100/00
RA/8100/M/80	100	80	G1/2	25	M/50/LSU/5V	QM/27/2/1	C0K511248	C02251248	C02471248	QA/8100/00
RA/8100/M/100	100	100	G1/2	25	M/50/LSU/5V	QM/27/2/1	C0K511248	C02251248	C02471248	QA/8100/00
RA/8100/M/125	100	125	G1/2	25	M/50/LSU/5V	QM/27/2/1	C0K511248	C02251248	C02471248	QA/8100/00
RA/8100/M/160	100	160	G1/2	25	M/50/LSU/5V	QM/27/2/1	C0K511248	C02251248	C02471248	QA/8100/00
RA/8100/M/200	100	200	G1/2	25	M/50/LSU/5V	QM/27/2/1	C0K511248	C02251248	C02471248	QA/8100/00
RA/8100/M/250	100	250	G1/2	25	M/50/LSU/5V	QM/27/2/1	C0K511248	C02251248	C02471248	QA/8100/00
RA/8100/M/320	100	320	G1/2	25	M/50/LSU/5V	QM/27/2/1	C0K511248	C02251248	C02471248	QA/8100/00
RA/8100/M/400	100	400	G1/2	25	M/50/LSU/5V	QM/27/2/1	C0K511248	C02251248	C02471248	QA/8100/00
RA/8100/M/500	100	500	G1/2	25	M/50/LSU/5V	QM/27/2/1	C0K511248	C02251248	C02471248	QA/8100/00

Para mais informações, visite e a store.norgren.com/br e utilize a nova função de busca. Se você não encontrou a opção que busca então entre em contato com seu time Express.

ATUADORES ISO/VDMA RA/8000/M

Dupla ação - Ø 32 a 320 mm

Modelos

Acessórios

Modelo	Diam. Ø	Curso	Rosca	Haste Ø	Sensor Reed com cabo de 5 m integral	Suporte do sensor	Banjo	Conexão reta	Cotovelo	Kit de reparo
RA/8125/M/250	125	250	G1/2	32	M/50/LSU/5V	QM/27/2/1	C0K511248	C02251248	C02471248	QA/8125/00
RA/8125/M/320	125	320	G1/2	32	M/50/LSU/5V	QM/27/2/1	C0K511248	C02251248	C02471248	QA/8125/00
RA/8125/M/400	125	400	G1/2	32	M/50/LSU/5V	QM/27/2/1	C0K511248	C02251248	C02471248	QA/8125/00
RA/8125/M/500	125	500	G1/2	32	M/50/LSU/5V	QM/27/2/1	C0K511248	C02251248	C02471248	QA/8125/00
RA/8160/M/250	160	250	G3/4	40	M/50/LSU/5V	QM/27/2/1	M/840 (em linha)	-	-	QA/8160/00
RA/8160/M/320	160	320	G3/4	40	M/50/LSU/5V	QM/27/2/1	M/840 (em linha)	-	-	QA/8160/00
RA/8160/M/400	160	400	G3/4	40	M/50/LSU/5V	QM/27/2/1	M/840 (em linha)	-	-	QA/8160/00
RA/8160/M/500	160	500	G3/4	40	M/50/LSU/5V	QM/27/2/1	M/840 (em linha)	-	-	QA/8160/00
RA/8200/M/***	200	sob encomenda	G3/4	40	M/50/LSU/5V	QM/27/2/1	M/840 (em linha)	-	-	QA/8200/00
RA/8250/M/***	250	sob encomenda	G1	50	QM/32/5	QM/31/250/22	M/855 (em linha)	-	-	QA/8250/00
RA/8320/M/***	320	sob encomenda	G1	63	QM/32/5	QM/31/320/22	M/855 (em linha)	-	-	QA/8320/00

*** Acrescentar curso em mm

Outros cursos disponíveis até 3,000mm, ligue para seu Time Express para informação sobre êmbulos magnéticos adicionais veja página 40

Para outros tipos, formatos ou tamanhos de conexão vá até nossa sessão de Conexões na página 165

LINK EXPRESS

Válvulas...

A despeito de suas diferenças em diâmetros e cursos, avanços na tecnologia de válvulas, resultam que uma válvula de apenas 1/8" é suficiente para operar esta linha completa de atuadores. Procure a série V60 na página 64 para maiores informações sobre a mais simples das soluções, ou fale com a sua equipe Express se você tiver requisitos mais complexos.



EXPRESS PLUS

Procurando um sistema de posicionamento de cilindro?

A Norgren disponibiliza posicionadores de cilindros para uma ampla série de combinações de diâmetros e cursos, com controladores Norgren ou outras marcas proprietárias, como Siemens, Eckhart e outras. Fale com o Time Express.



PARA ALTO DESEMPENHO E CONFIABILIDADE, ESCOLHA NORGREN.

Milhares de produtos e acessórios disponíveis para entrega imediata.

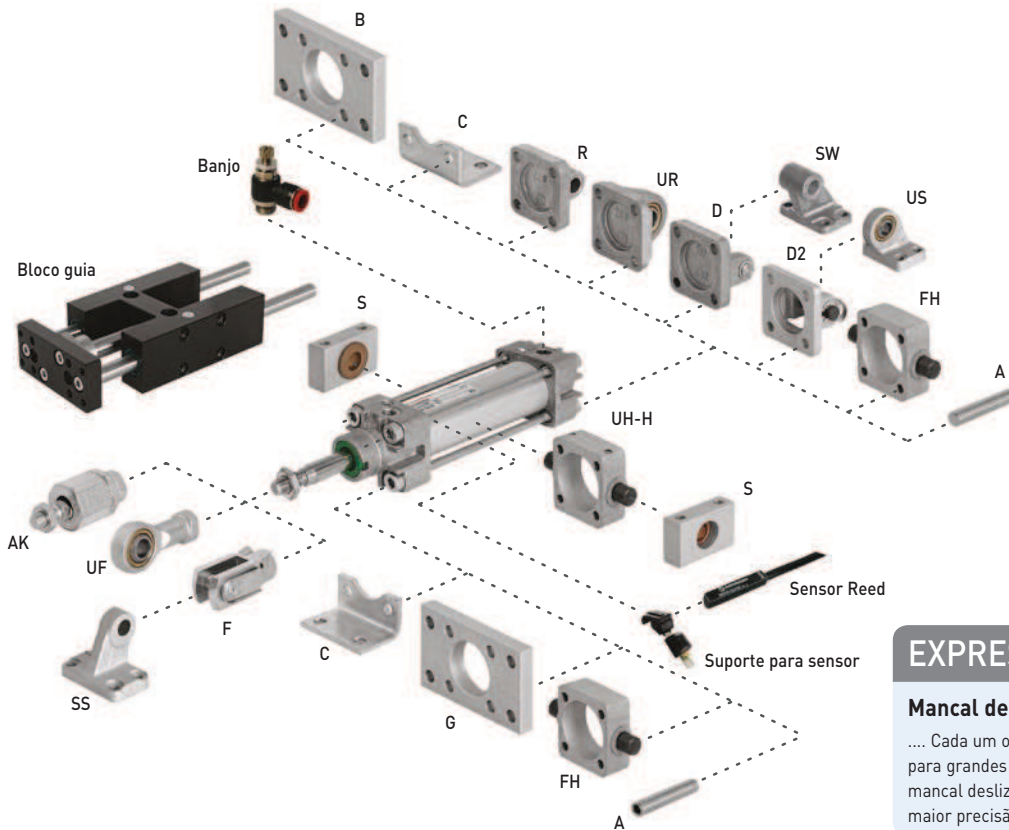
- Sempre em estoque
- Entrega rápida
- Garantia gratuita de 2 anos

COM BENEFÍCIOS EXCLUSIVOS DO NORGREN EXPRESS E CONFORMIDADE DIMENSIONAL À ISO6432, ESTE PRODUTO PODE SUBSTITUIR:

- Linha Festo DNCB
- Linha Parker P1D
- Linhas SMC C95, CP95 e CP96
- Linha Bosch Rexroth PRA
- Airtac ISO/VDMA
- Série Camozzi 61
- Série K Univer
- Linha Hoerbiger DZ
- Série 1300 Pneumax
- E muitas outras...

Para mais informações, visite e a store.norgren.com/br e utilize a nova função de busca. Se você não encontrou a opção que busca então entre em contato com seu time Express.

MONTAGENS PARA ATUADORES ISO/VDMA RA/8000/M



EXPRESS PLUS

Mancal deslizante e de rolamento

.... Cada um oferece diferentes vantagens, para grandes cargas laterais prefira um mancal deslizante, para altas velocidades e maior precisão prefira mancal de rolamento.

Diam. Ø A	AK	B, G	C	D	D2	F	FH	H	
32	QM/8032/35	QM/8025/38	QA/8032/22	QA/8032/21	QA/8032/23	QA/8032/42	QM/8025/25	QA/8032/34	QA/8032/28
40	QM/8032/35	QM/8040/38	QA/8040/22	QA/8040/21	QA/8040/23	QA/8040/42	QM/8040/25	QA/8040/34	QA/8040/28
50	QM/8050/35	QM/8050/38	QA/8050/22	QA/8050/21	QA/8050/23	QA/8050/42	QM/8050/25	QA/8050/34	QA/8050/28
63	QM/8050/35	QM/8050/38	QA/8063/22	QA/8063/21	QA/8063/23	QA/8063/42	QM/8050/25	QA/8063/34	QA/8063/28
80	QM/8080/35	QM/8080/38	QA/8080/22	QA/8080/21	QA/8080/23	QA/8080/42	QM/8080/25	QA/8080/34	QA/8080/28
100	QM/8080/35	QM/8080/38	QA/8100/22	QA/8100/21	QA/8100/23	QA/8100/42	QM/8080/25	QA/8100/34	QA/8100/28
125	QM/8125/35	QM/8125/38	QM/8125/22	QM/8125/21	QM/8125/23	QA/8125/42	QM/8125/25	QA/8125/34	QM/8125/28
160	QM/8160/35	QM/8160/38	QM/8160/22	QM/8160/21	QM/8160/23	QA/8160/42	QM/8160/25	-	QM/8160/28
200	QM/8160/35	QM/8160/38	QM/8200/22	QM/8200/21	QM/8200/23	QA/8200/42	QM/8160/25	-	QM/8200/28
250	QM/8250/35	-	QM/8250/22	QM/8250/21	QM/8250/23	-	QM/8250/25	-	QM/8250/28
320	QM/8320/35	-	QM/8320/22	QM/8320/21	QM/8320/23	-	QM/8320/25	-	QM/8320/28

Diam. Ø R	S	SS	SW	UF	UH	UR	US		
32	QA/8032/27	QA/8032/41	M/P19931	M/P19493	QM/8025/32	QA/8032/40	QA/8032/33	M/P40310	-
40	QA/8040/27	QA/8040/41	M/P19932	M/P19494	QM/8040/32	QA/8040/40	QA/8040/33	M/P40311	-
50	QA/8050/27	QA/8040/41	M/P19933	M/P19495	QM/8050/32	QA/8050/40	QA/8050/33	M/P40312	-
63	QA/8063/27	QA/8063/41	M/P19934	M/P19496	QM/8050/32	QA/8063/40	QA/8063/33	M/P40313	-
80	QA/8080/27	QA/8063/41	M/P19935	M/P19497	QM/8080/32	QA/8080/40	QA/8080/33	M/P40314	-
100	QA/8100/27	QA/8100/41	M/P19936	M/P19498	QM/8080/32	QA/8100/40	QA/8100/33	M/P40315	-
125	QM/8125/27	QA/8100/41	M/P19937	M/P19499	QM/8125/32	QA/8125/40	QM/8125/33	M/P71355	-
160	QM/8160/27	QA/8160/41	M/P19938	M/P19679	QM/8160/32	QA/8160/40	QM/8160/33	M/P71356	-
200	QM/8200/27	QA/8160/41	M/P19939	M/P19683	QM/8160/32	QA/8200/40	QM/8200/33	M/P71357	-
250	-	-	-	M/P19446	QM/8250/32	-	QM/8250/33	-	-
320	-	-	-	M/P19447	QM/8320/32	-	QM/8320/33	-	-

Ø	Bloco Guia	Bloco Guia
32	QA/8032/51/*	QA/8032/61/*
40	QA/8040/51/*	QA/8040/61/*
50	QA/8050/51/*	QA/8050/61/*
63	QA/8063/51/*	QA/8063/61/*
80	QA/8080/51/*	QA/8080/61/*
100	QA/8100/51/*	QA/8100/61/*

Cursos padrão para bloco guia

Ø	50	100	160	200	250	320	400	500
32	•	•	•	•	•	•	•	•
40	•	•	•	•	•	•	•	•
50	•	•	•	•	•	•	•	•
63	•	•	•	•	•	•	•	•
80	•	•	•	•	•	•	•	•
100	•	•	•	•	•	•	•	•

* Acrescentar o curso da tabela à direita
 Nota: QA/8___/51/* = Mancal deslizante
 QA/8___/61/* = Mancal de rolamento

Outros cursos não estão disponíveis, utilize o curso padrão mais próximo. Curso máximo 500 mm.

Para mais informações, visite a store.norgren.com/br e utilize a nova função de busca. Se você não encontrou a opção que busca então entre em contato com seu time Express.